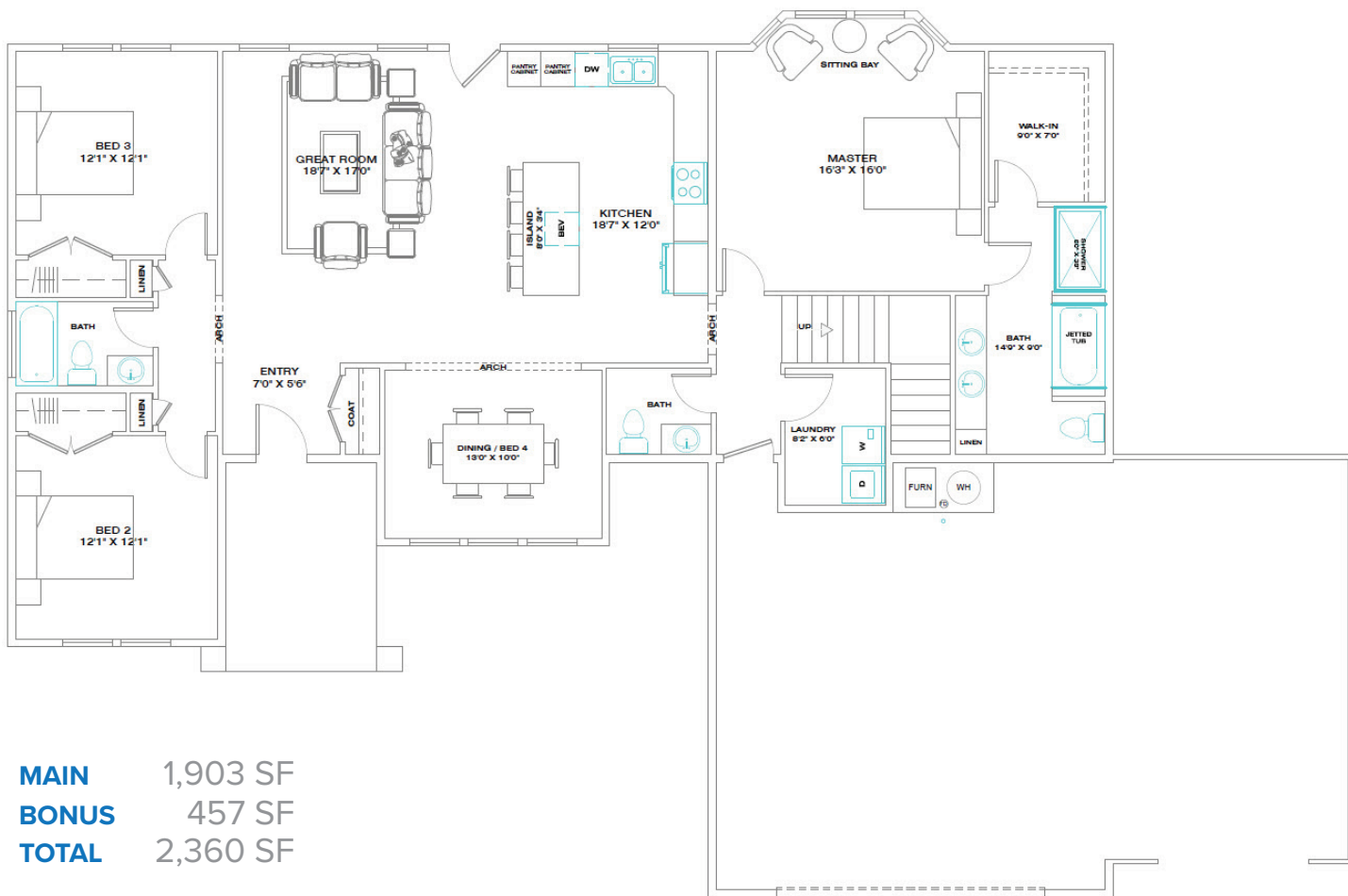
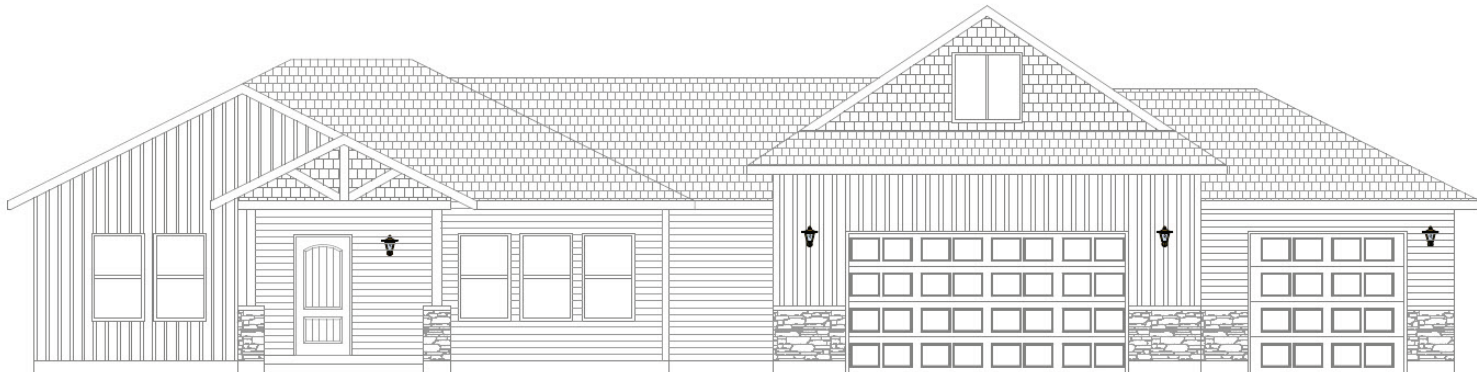


# THE HARTFORD HOME (BONUS ROOM SERIES)

4-5 bed | 2-3 bath | 3 car  
Spring Creek, NV - by Bailey Homes

## MAIN LEVEL

### 1,903 SF



**MAIN** 1,903 SF  
**BONUS** 457 SF  
**TOTAL** 2,360 SF

Bailey Homes  
NV Lic 80318

775-777-7773  
info@newhomeselko.com

780 W. Silver St. #104  
Elko, NV 89801

Mon-Fri 8:30am-5:00pm  
Sat-Sun BY APPOINTMENT

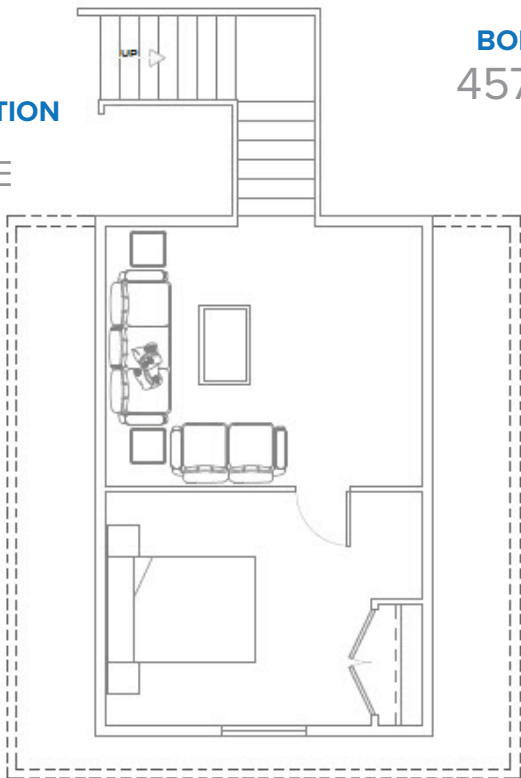


**BAILEYHOMES**  
LIVE BETTER

# THE HARTFORD HOME (BONUS ROOM SERIES)

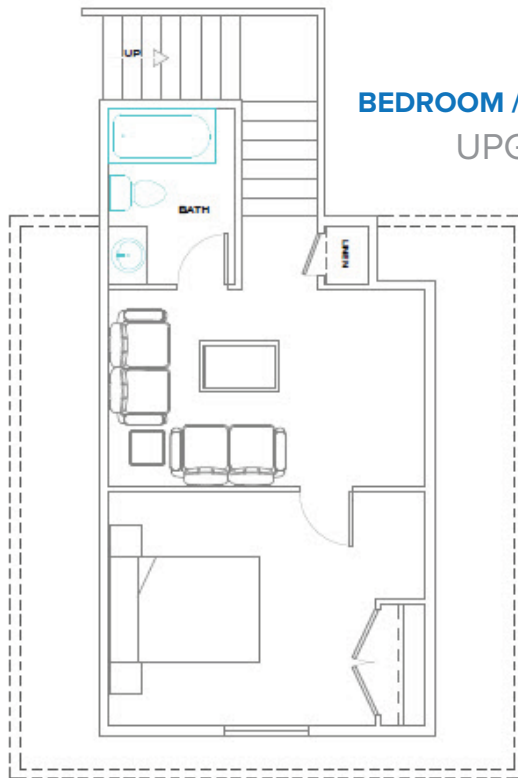
Spring Creek, NV - by Bailey Homes

**BEDROOM OPTION  
UPGRADE**

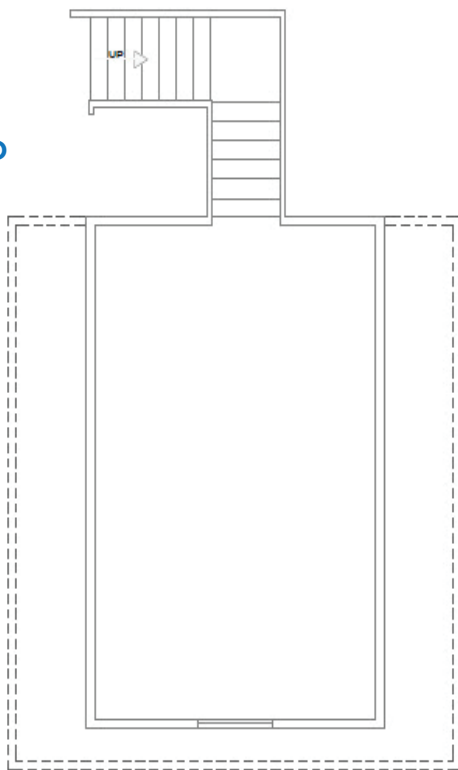


**BONUS  
457 SF**

**BEDROOM / BATH OPTION  
UPGRADE**



**STANDARD**



Bailey Homes  
NV Lic 80318

775-777-7773  
info@newhomeselko.com

780 W. Silver St. #104  
Elko, NV 89801

Mon-Fri 8:30am-5:00pm  
Sat-Sun BY APPOINTMENT



**BAILEYHOMES**  
LIVE BETTER

# STANDARD FEATURES

Spring Creek, NV - by Bailey Homes

## A versatile floor plan with large, open spaces.

The Hartford model has quickly become a favorite among our buyers. It is a versatile 3-4 bedroom home with views from the front and back. The main level is a split floor plan with three bedrooms, two and a half baths, large great room with vaulted ceilings, formal dining room and large laundry room. The kitchen is spacious and open with an 8' island and an abundance of cabinet and counter-top space. The oversized formal dining room has plenty of natural light through 3 large windows. The master suite includes a full spacious bathroom with separate shower stall, jetted tub and double sinks. For even more space, we've added the bonus room option over the garage.

### EXTERIOR

- Full upgraded vinyl siding with stone accents
- 30 year architectural shingles
- Rain gutters & downspouts
- Covered front porch

### GREAT ROOM

- Large open design, perfect for entertaining
- Ceiling fan & light combo

### MASTER SUITE

- Large master bedroom
- Large walk-in closet
- Ceiling fan & light combo
- Spacious jetted tub with tile surround
- Separate shower
- Birchwood vanity cabinet with dovetail drawers
- Granite countertops

### BATHROOMS

- Birchwood vanity cabinet with dovetail drawers
- Soft close drawers
- Granite countertops
- Tile floors
- Moen faucets

### KITCHEN & DINING

- Birchwood articulated cabinets with crown mould
- Soft close drawers
- Granite countertops with full tile backsplash
- Large kitchen bar
- Energy Star stainless steel appliances
- Engineered hardwood or tile floors
- Moen faucets

### ENERGY EFFICIENT DESIGN

- Heavy duty insulation
- 1" thick insulated LOW-E glass windows
- Insulated crawl-space foundation or basement

### GARAGE

- Extra large 3 car garage
- Sheetrocked & Insulated
- Garage door openers with digital keyless security pad

### OTHER

- Bailey Homes 10 Year Warranty
- Central air conditioning
- Propane Furnace



Bailey Homes  
NV Lic 80318

775-777-7773  
info@newhomeselko.com

780 W. Silver St. #104  
Elko, NV 89801

Mon-Fri 8:30am-5:00pm  
Sat-Sun BY APPOINTMENT



**BAILEYHOMES**  
LIVE BETTER