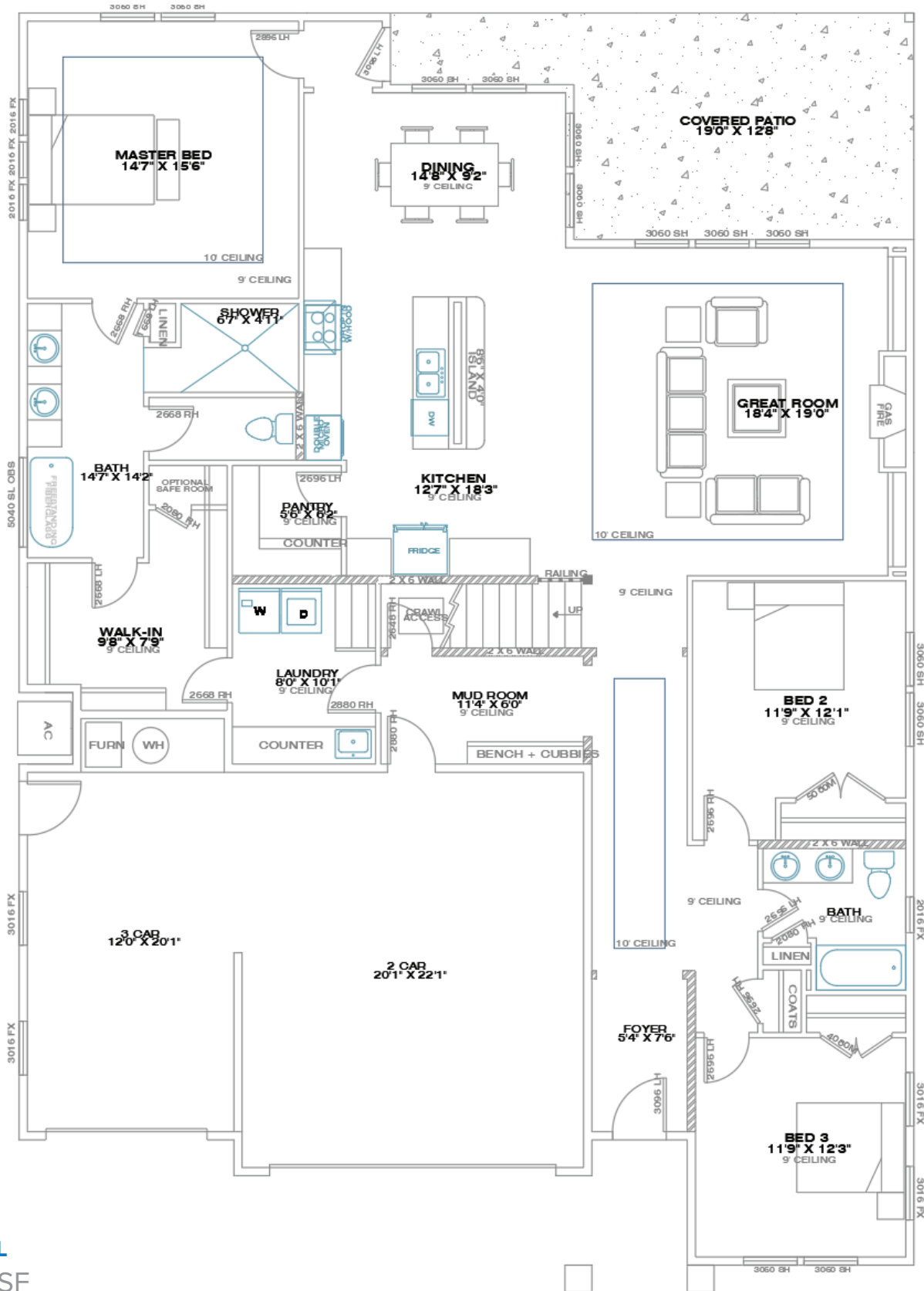


# THE DUBLIN HOME

4 bed | 3 bath | 3 car  
CAMBRIDGE ESTATES @ Elko, NV - by Bailey Homes

**MAIN LEVEL**  
2,256 SF



**TOTAL**  
2,943 SF

Bailey Homes  
NV Lic 3417A

775-777-7773  
info@newhomeselko.com

780 W. Silver St. #104  
Elko, NV 89801

Mon-Fri 8:30am-5:00pm  
Sat-Sun BY APPOINTMENT

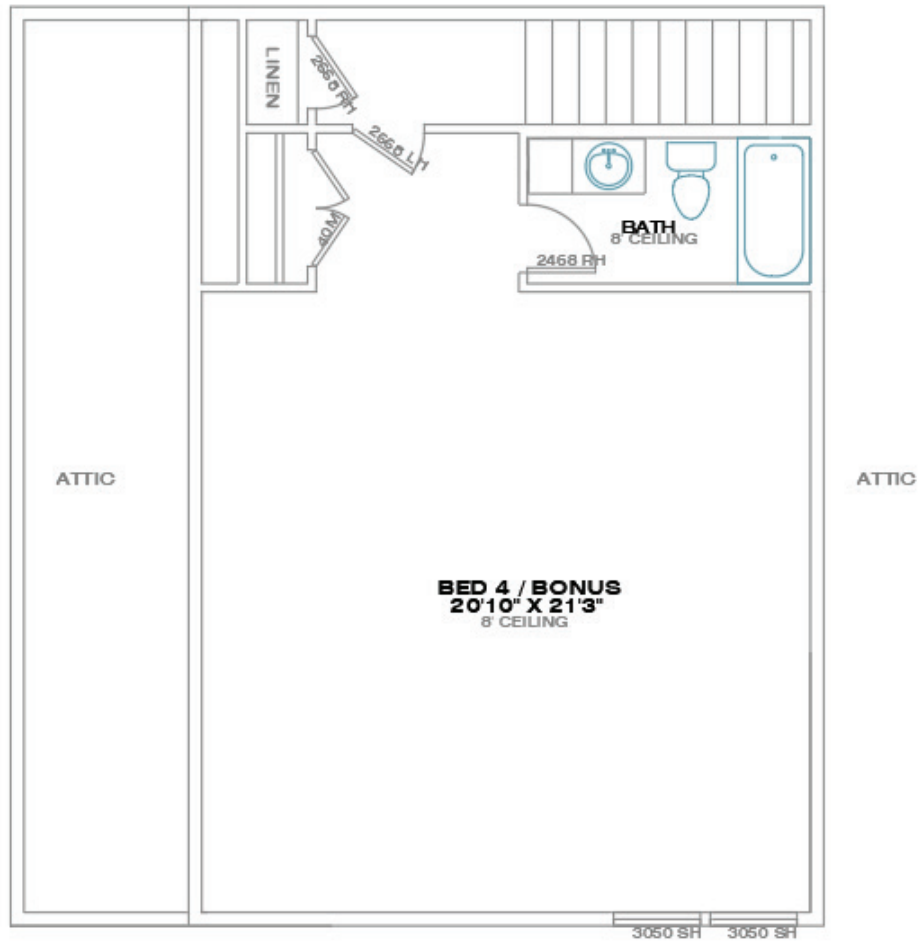


# THE DUBLIN HOME

4 bed | 3 bath | 3 car

CAMBRIDGE ESTATES @ Elko, NV - by Bailey Homes

**2ND LEVEL**  
687 SF



**TOTAL**  
2,943 SF

Bailey Homes  
NV Lic 3417A



775-777-7773  
info@newhomeselko.com



780 W. Silver St. #104  
Elko, NV 89801



Mon-Fri 8:30am-5:00pm  
Sat-Sun BY APPOINTMENT



**BAILEY  
HOMES**  
LIVE BETTER

## 4 bedroom executive home

A spacious 4 bedroom home with open living design. 9' ceilings throughout with a 2 story ceiling in the entry. Large kitchen with a massive 8'6" long island, gas range with hood and upgraded appliances. The master suite includes an extra large walk-in closet and luxury bath with a walk-in shower with tiled walls and freestanding tub. Expect all the same luxury standards included with every Bailey home.

### EXTERIOR

Hardy board siding, stucco, stone accents  
30 year architectural shingles  
Rain gutters & downspouts  
Covered front porch

### GREAT ROOM

Large open design, perfect for entertaining  
Luxury Vinyl Plank flooring  
Ceiling fan & recessed lighting  
10' ceiling tray

### MASTER SUITE

Walk-in closet  
Ceiling fan & recessed lighting  
Spacious jetted tub with tile surround  
Extra large walk-in shower with tile walls  
Vanity cabinet with dovetail drawers  
Soft close doors  
Soft close drawers  
Granite countertops

### BATHROOMS

Vanity cabinet with dovetail drawers & soft close  
Soft close drawers  
Granite countertops  
Tile floors  
Moен faucets

### KITCHEN & DINING

Articulated cabinets with crown moulding  
Staggered heights and depths  
Soft close drawers  
Soft close doors  
Granite countertops with full tile backsplash  
Large kitchen bar  
Energy Star stainless steel appliances  
Luxury Vinyl Plank flooring  
Moен faucets

### ENERGY EFFICIENT DESIGN

Heavy duty insulation  
1" thick insulated LOW-E glass windows  
Insulated crawl-space foundation or basement

### GARAGE

Extra large 2 car garage  
Sheetrocked & Insulated  
Garage door openers with digital keyless security pad

### OTHER

Central air conditioning  
Natural Gas Furnace  
Electric Fireplace

