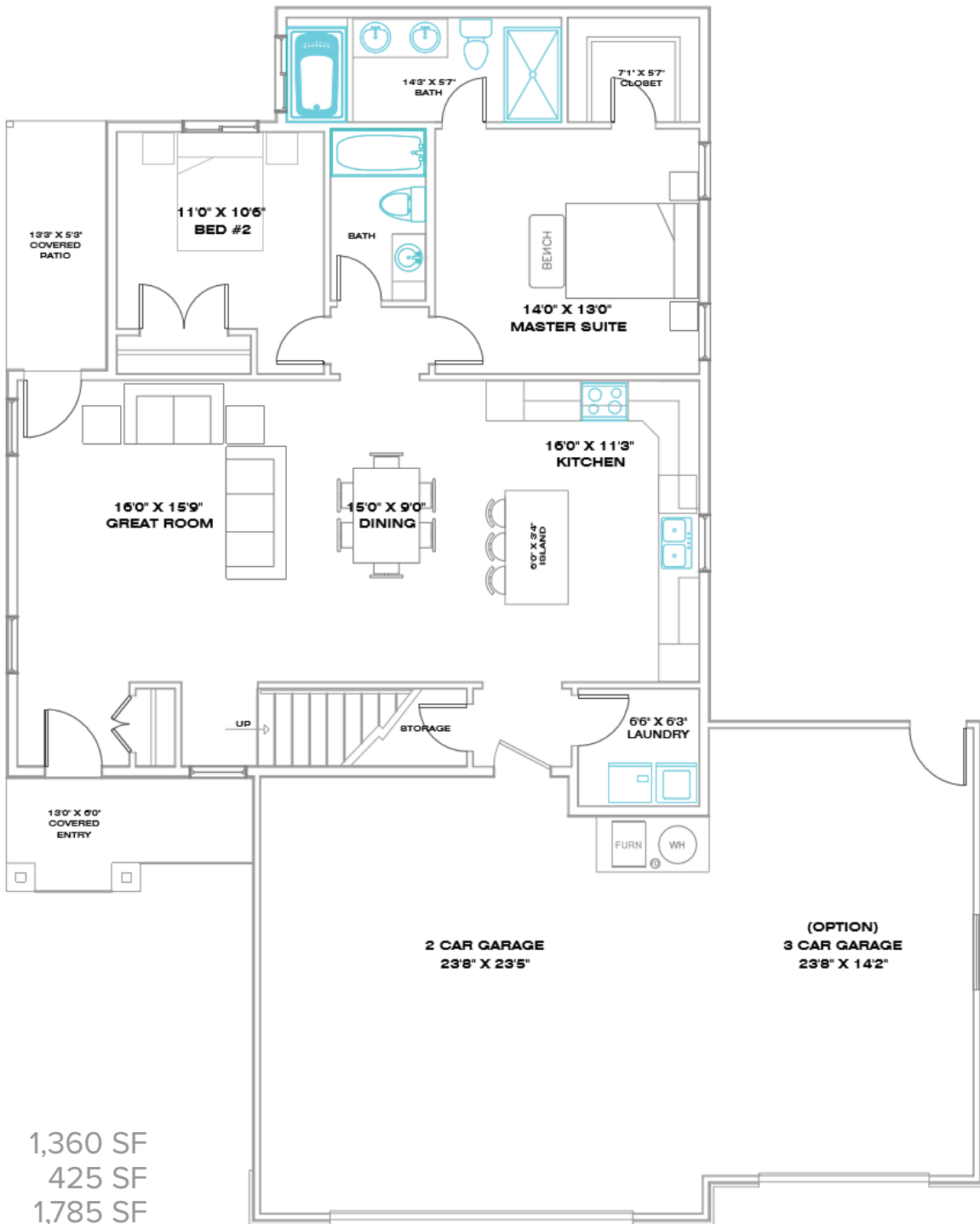


# THE ASPEN HOME (WITH BONUS ROOM)

3 bed | 2-3 bath | 3 car  
Spring Creek, NV - by Bailey Homes

## MAIN LEVEL 1,360 SF



**MAIN** 1,360 SF  
**BONUS** 425 SF  
**TOTAL** 1,785 SF

Bailey Homes  
NV Lic 80318

775-777-7773  
info@newhomeselko.com

780 W. Silver St. #104  
Elko, NV 89801

Mon-Fri 8:30am-5:00pm  
Sat-Sun BY APPOINTMENT



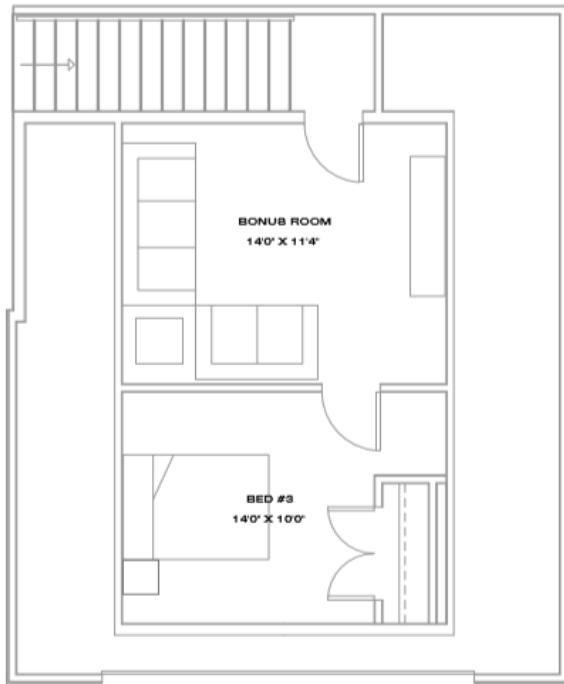
**BAILEYHOMES**  
LIVE BETTER

# THE ASPEN HOME (WITH BONUS ROOM)

3 bed | 2-3 bath | 3 car  
Spring Creek, NV - by Bailey Homes

## BONUS LEVEL 425 SF

### BEDROOM OPTION (STANDARD)



### BEDROOM / BATH OPTION UPGRADE



**MAIN** 1,360 SF  
**BONUS** 425 SF  
**TOTAL** 1,785 SF

Bailey Homes  
NV Lic 80318



775-777-7773  
info@newhomeselko.com



780 W. Silver St. #104  
Elko, NV 89801



Mon-Fri 8:30am-5:00pm  
Sat-Sun BY APPOINTMENT



**BAILEYHOMES**  
LIVE BETTER

# STANDARD FEATURES

Spring Creek, NV - by Bailey Homes

## Unbeatable value - home with a bonus room.

This smart design offers an extra large kitchen, dining and great room space. Perfect for entertaining or large family gatherings. A bonus room above the garage and a large basement offers a great way to maximize square footage while still allowing a very affordable price. For extra space, consider adding a spacious basement.

### EXTERIOR

Full upgraded vinyl siding with stone accents  
30 year architectural shingles  
Rain gutters & downspouts  
Covered front porch

### GREAT ROOM

Large open design, perfect for entertaining  
Ceiling fan & light combo

### MASTER SUITE

Large master bedroom  
Large walk-in closet  
Ceiling fan & light combo  
Spacious jetted tub with tile surround  
Separate shower  
Birchwood vanity cabinet with dovetail drawers  
Granite countertops

### BATHROOMS

Birchwood vanity cabinet with dovetail drawers  
Soft close drawers  
Granite countertops  
Tile floors  
Moen faucets

### KITCHEN & DINING

Birchwood articulated cabinets with crown mould  
Soft close drawers  
Granite countertops with full tile backsplash  
Large kitchen bar  
Energy Star stainless steel appliances  
Engineered hardwood or tile floors  
Moen faucets

### ENERGY EFFICIENT DESIGN

Heavy duty insulation  
1" thick insulated LOW-E glass windows  
Insulated crawl-space foundation or basement

### GARAGE

Extra large 3 car garage  
Sheetrocked & Insulated  
Garage door openers with digital keyless security pad

### OTHER

Bailey Homes 10 Year Warranty  
Central air conditioning  
Propane Furnace



Bailey Homes  
NV Lic 80318



775-777-7773  
info@newhomeselko.com



780 W. Silver St. #104  
Elko, NV 89801



Mon-Fri 8:30am-5:00pm  
Sat-Sun BY APPOINTMENT



BAILEYHOMES  
LIVE BETTER