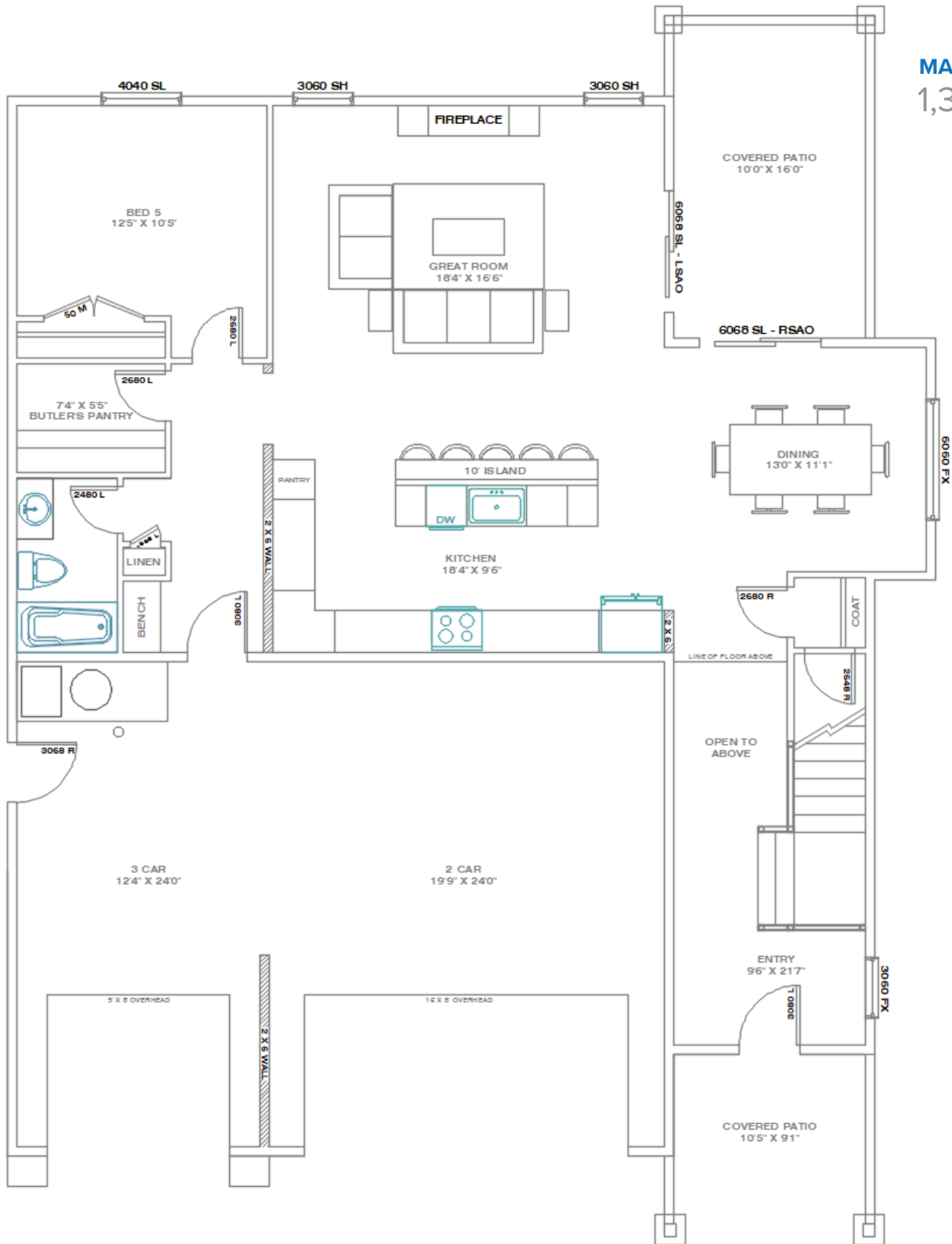


# THE KATESBRIDGE HOME

5 bed | 4 bath | 3 car  
CAMBRIDGE ESTATES @ Elko, NV - by Bailey Homes

**MAIN LEVEL**  
1,324 SF



**TOTAL**  
3,195 SF

Bailey Homes  
NV Lic 3417A



775-777-7773  
info@newhomeselko.com



780 W. Silver St. #104  
Elko, NV 89801



Mon-Fri 8:30am-5:00pm  
Sat-Sun BY APPOINTMENT



**BAILEY  
HOMES**  
LIVE BETTER

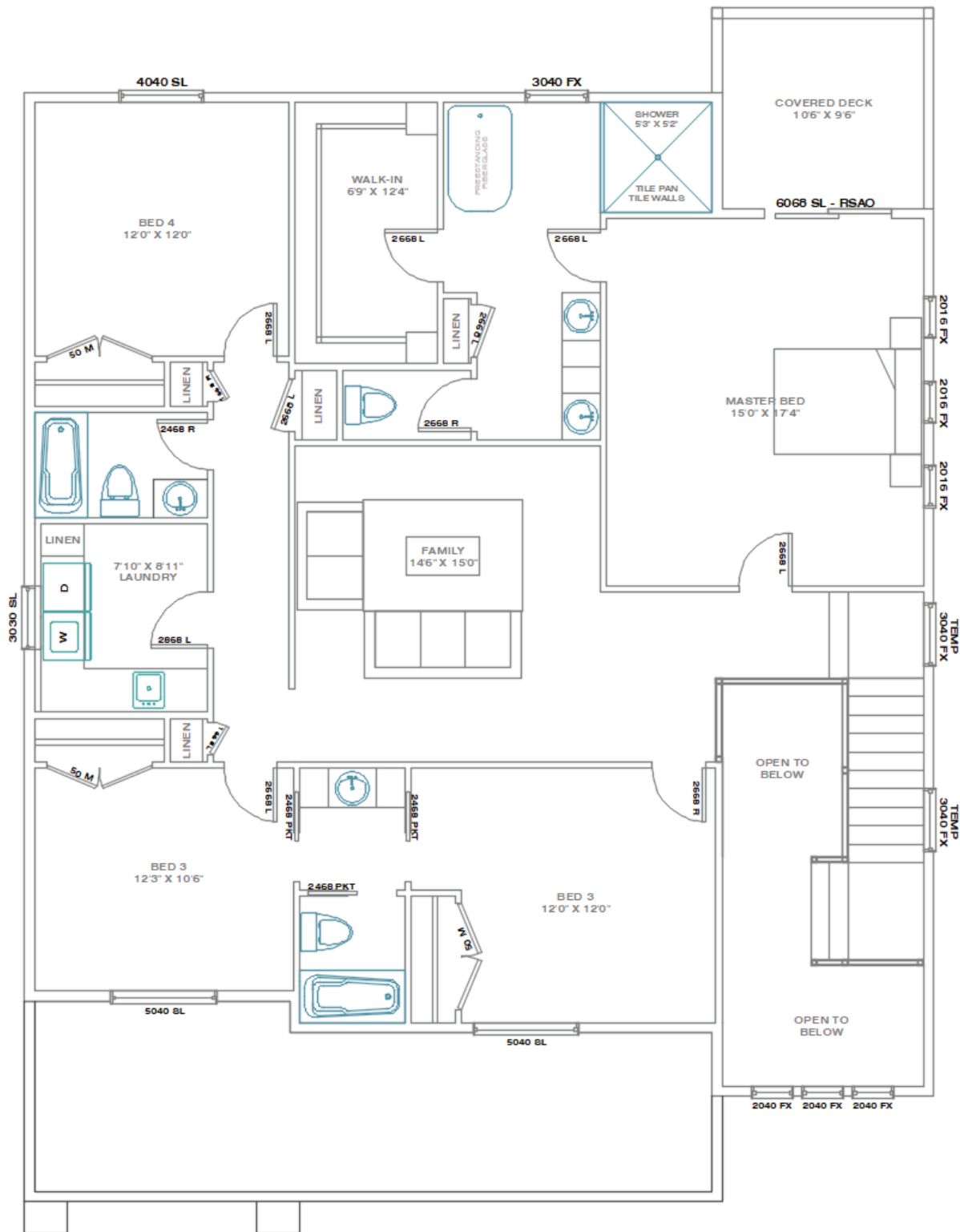
5 bed | 4 bath | 3 car  
CAMBRIDGE ESTATES @ Elko, NV - by Bailey Homes

5 bed | 4 bath | 3 car

CAMBRIDGE ESTATES @ Elko, NV - by Bailey Homes

## 2ND LEVEL

1,871 SF

**TOTAL**

3,195 SF

## 5 Bedroom Executive Home

A spacious 5 bedroom home with open living design. 9' ceilings throughout with a 2 story ceiling in the entry. Large kitchen with a massive 10' long island, gas range with hood and stainless steel appliances. The master suite includes an extra large walk-in closet and luxury bath with a walk-in shower with tiled walls and freestanding tub. Expect all the same luxury standards included with every Bailey home.

### EXTERIOR

- Hardy board siding, stucco, stone accents
- 30 year architectural shingles
- Rain gutters & downspouts
- Covered front porch
- Covered back porch
- Covered master balcony

### GREAT ROOM

- Large open design, perfect for entertaining
- Luxury Vinyl Plank flooring
- Ceiling fan & recessed lighting

### MASTER SUITE

- Walk-in closet
- Ceiling fan & recessed lighting
- Spacious free standing tub
- Extra large walk-in shower with tile walls & floors
- Glass shower door
- Vanity cabinet with dovetail drawers
- Soft close doors
- Soft close drawers
- Granite countertops
- Covered private balcony

### BATHROOMS

- Vanity cabinet with dovetail drawers
- Soft close doors
- Soft close drawers
- Granite countertops
- LVP or Tile floors
- Moen faucets

### KITCHEN & DINING

- Cabinets with crown moulding
- Staggered heights and depths
- Soft close drawers
- Soft close doors
- Granite countertops with full tile backsplash
- Large kitchen island
- Stainless steel gas range, hood, microwave, dishwasher, fridge
- LVP flooring
- Moen faucets

### ENERGY EFFICIENT DESIGN

- Heavy duty insulation
- 1" thick insulated LOW-E glass windows
- Insulated crawl-space foundation

### GARAGE

- Extra large 3 car garage
- Sheetrocked & Insulated
- Garage door openers with digital keyless security pad

### OTHER

- Central air conditioning
- Natural gas furnace
- Electric fireplace

