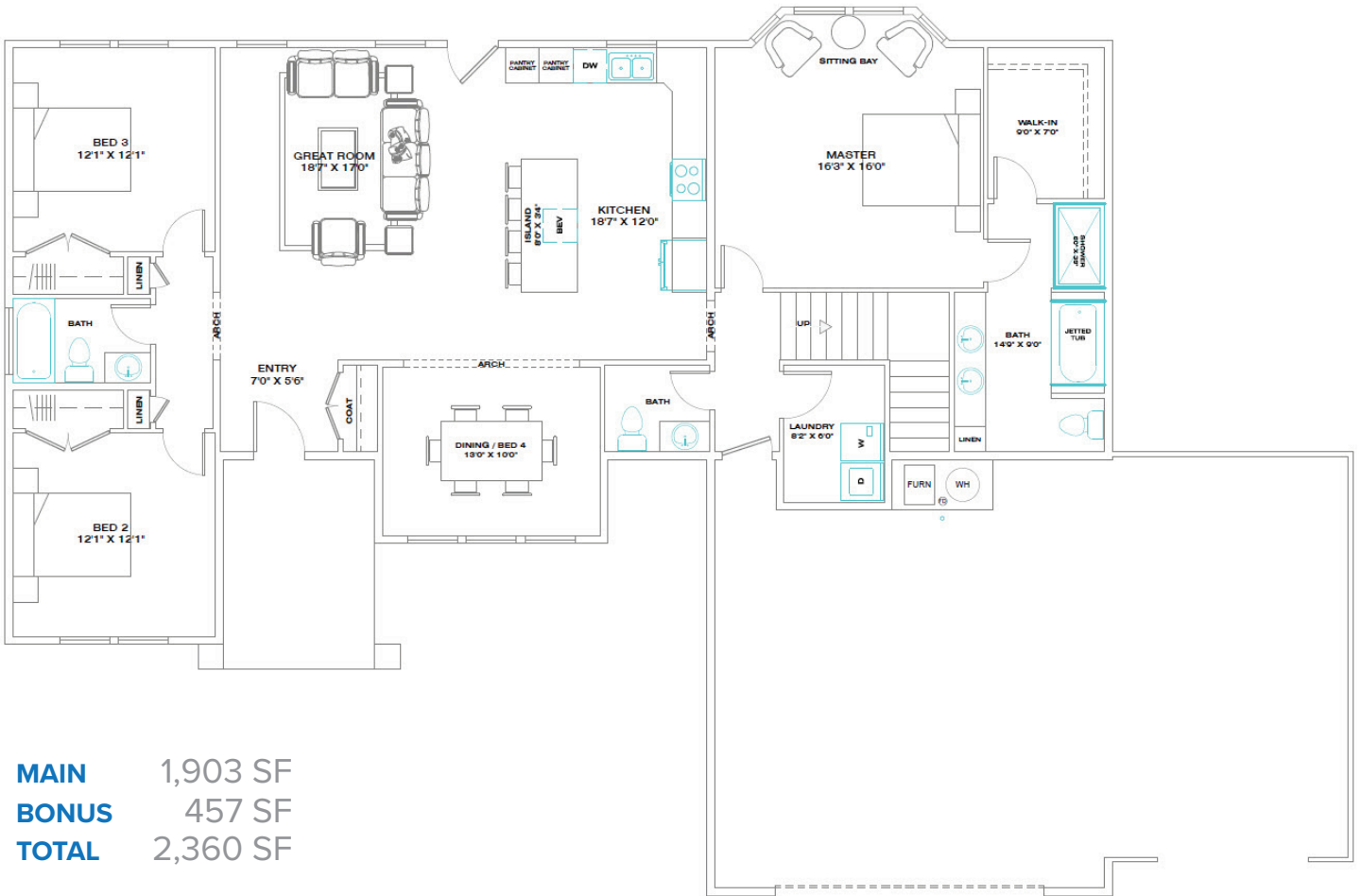
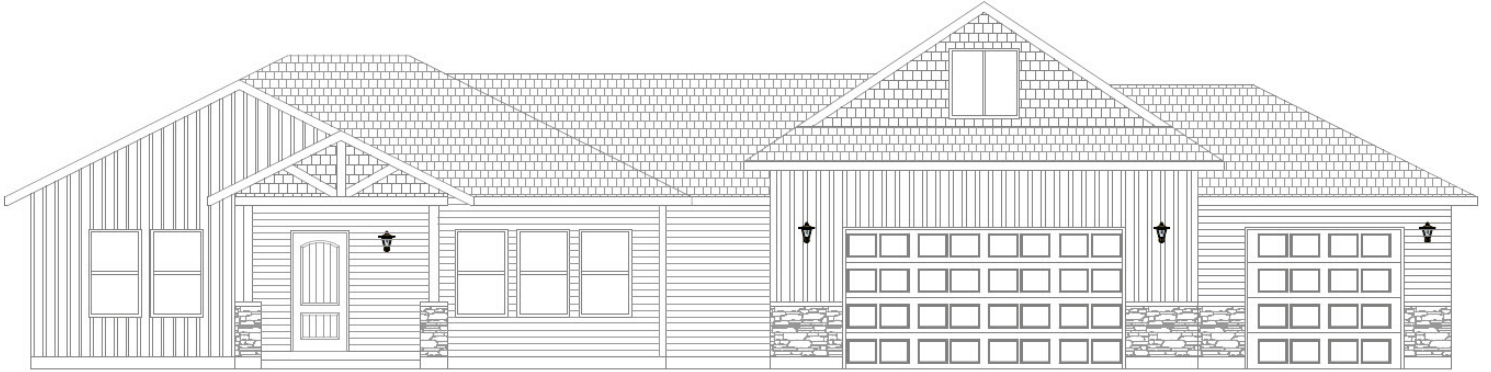


# THE HARTFORD HOME (BONUS ROOM SERIES)

4-5 bed | 2-3 bath | 3 car  
Battle Mountain, NV - by Bailey Homes

**MAIN LEVEL**  
1,903 SF



**MAIN** 1,903 SF  
**BONUS** 457 SF  
**TOTAL** 2,360 SF

Bailey Homes  
NV Lic 80318

775-777-7773  
info@newhomeselko.com

780 W. Silver St. #104  
Elko, NV 89801

Mon-Fri 8:30am-5:00pm  
Sat-Sun BY APPOINTMENT

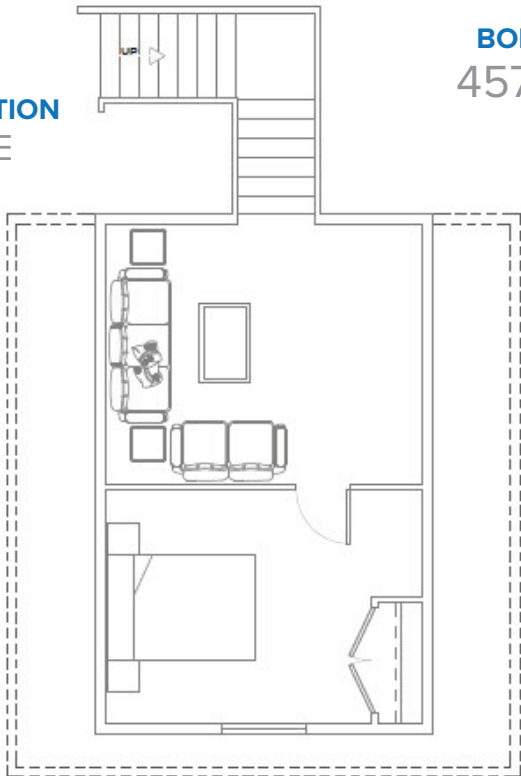


**BAILEYHOMES**  
LIVE BETTER

# THE HARTFORD HOME (BONUS ROOM SERIES)

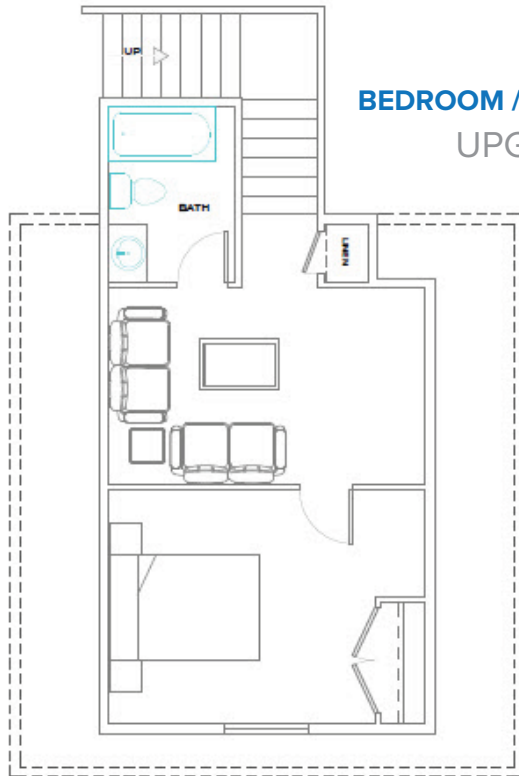
Battle Mountain, NV - by Bailey Homes

**BEDROOM OPTION  
UPGRADE**

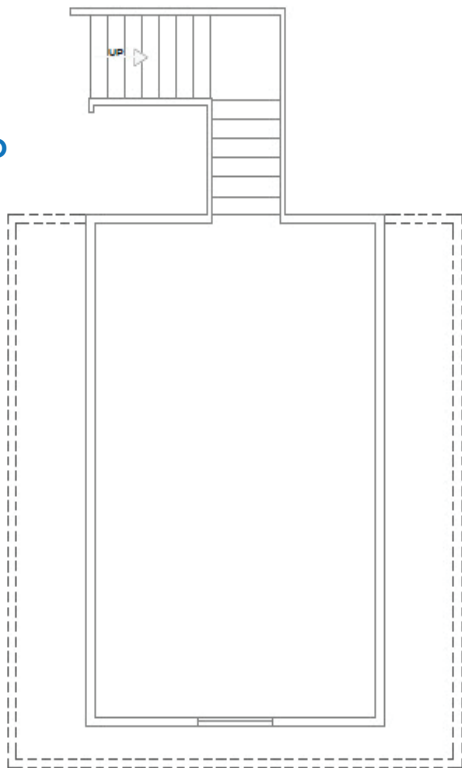


**BONUS  
457 SF**

**BEDROOM / BATH OPTION  
UPGRADE**



**STANDARD**



Bailey Homes  
NV Lic 80318

775-777-7773  
info@newhomeselko.com

780 W. Silver St. #104  
Elko, NV 89801

Mon-Fri 8:30am-5:00pm  
Sat-Sun BY APPOINTMENT



**BAILEYHOMES**  
LIVE BETTER

# STANDARD FEATURES

Battle Mountain, NV - by Bailey Homes

## A versatile floor plan with large, open spaces.

The Hartford model has quickly become a favorite among our buyers. It is a versatile 3-4 bedroom home with views from the front and back. The main level is a split floor plan with three bedrooms, two and a half baths, large great room with vaulted ceilings, formal dining room and large laundry room. The kitchen is spacious and open with an 8' island and an abundance of cabinet and counter-top space. The oversized formal dining room has plenty of natural light through 3 large windows. The master suite includes a full spacious bathroom with separate shower stall, jetted tub and double sinks. For even more space, we've added the bonus room option over the garage.

### EXTERIOR

Full upgraded vinyl siding with stone accents  
30 year architectural shingles  
Rain gutters & downspouts  
Covered front porch

### GREAT ROOM

Large open design, perfect for entertaining  
Ceiling fan & light combo

### MASTER SUITE

Large master bedroom  
Large walk-in closet  
Ceiling fan & light combo  
Spacious jetted tub with tile surround  
Separate shower  
Birchwood vanity cabinet with dovetail drawers  
Granite countertops

### BATHROOMS

Birchwood vanity cabinet with dovetail drawers  
Soft close drawers  
Granite countertops  
Tile floors  
Moen faucets

### KITCHEN & DINING

Birchwood articulated cabinets with crown mould  
Soft close drawers  
Granite countertops with full tile backsplash  
Large kitchen bar  
Energy Star stainless steel appliances  
Engineered hardwood or tile floors  
Moen faucets

### ENERGY EFFICIENT DESIGN

Heavy duty insulation  
1" thick insulated LOW-E glass windows  
Insulated crawl-space foundation or basement

### GARAGE

Extra large 3 car garage  
Sheetrocked & Insulated  
Garage door openers with digital keyless security pad

### OTHER

Bailey Homes 10 Year Warranty  
Central air conditioning  
Propane Furnace



Bailey Homes  
NV Lic 80318

775-777-7773  
info@newhomeselko.com

780 W. Silver St. #104  
Elko, NV 89801

Mon-Fri 8:30am-5:00pm  
Sat-Sun BY APPOINTMENT

