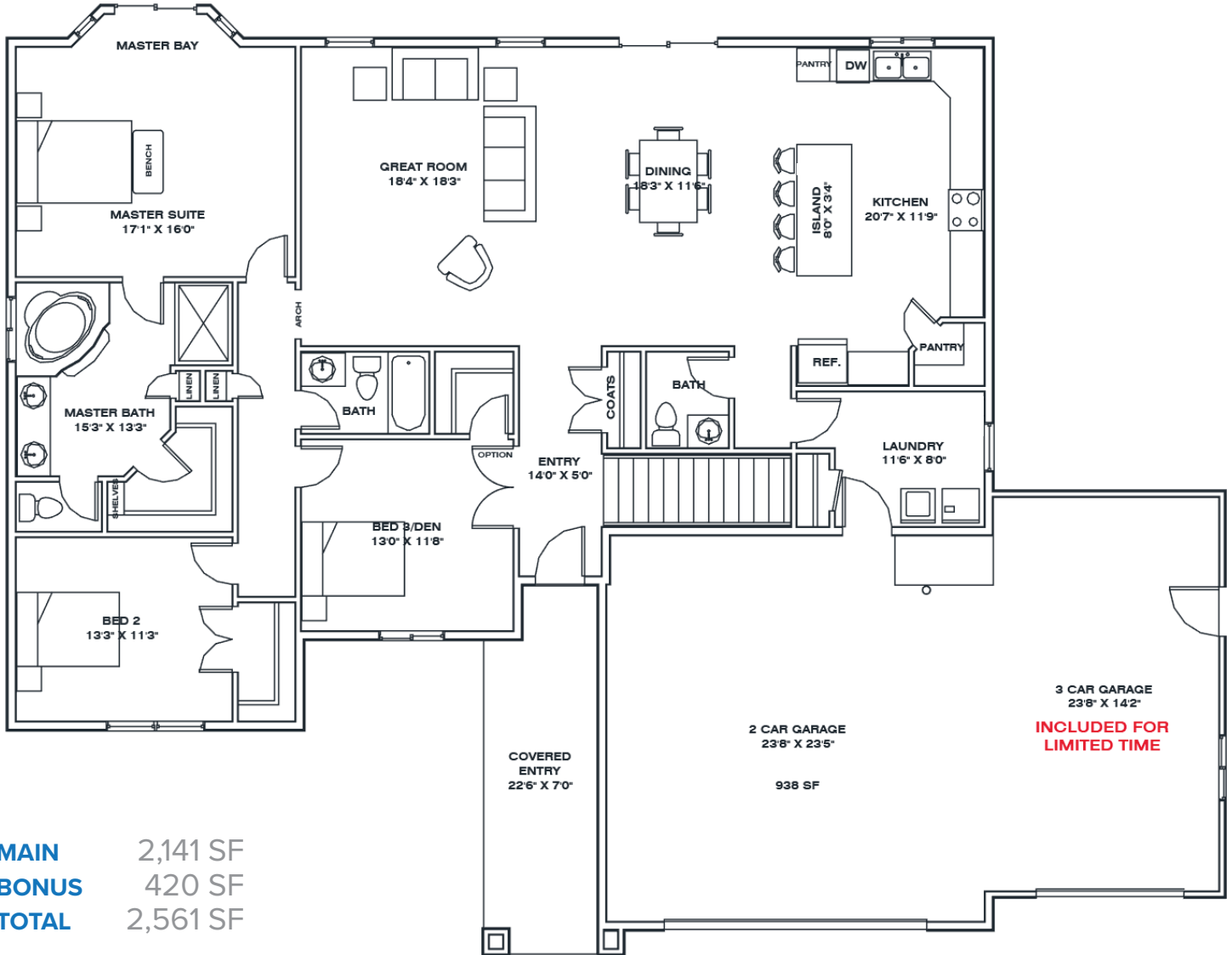


# THE CHARLESTON HOME (BONUS ROOM SERIES)

3-4 bed | 2.5 bath | 3 car  
Spring Creek, NV - by Bailey Homes



## MAIN LEVEL 2,141 SF



**MAIN** 2,141 SF  
**BONUS** 420 SF  
**TOTAL** 2,561 SF

Bailey Homes  
NV Lic 80318

775-777-7773  
info@newhomeselko.com

780 W. Silver St. #104  
Elko, NV 89801

Mon-Fri 8:30am-5:00pm  
Sat-Sun BY APPOINTMENT

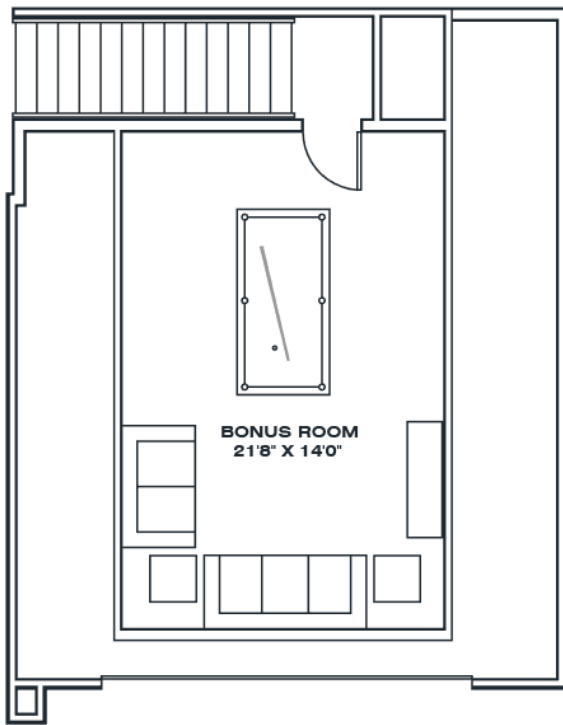


**BAILEYHOMES**  
LIVE BETTER

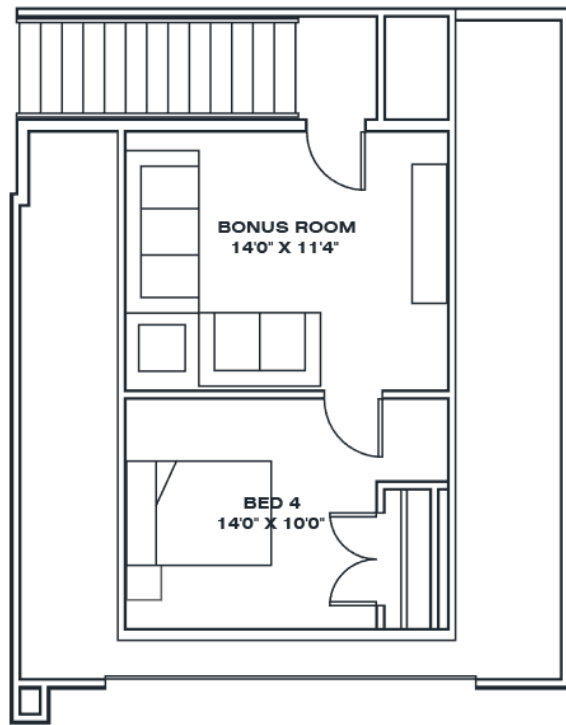
THE CHARLESTON HOME (BONUS ROOM SERIES) ... "BONUS ROOM OPTIONS"  
Spring Creek, NV - by Bailey Homes

**BONUS**  
420 SF

**STANDARD**



**BEDROOM OPTION**  
UPGRADE



Bailey Homes  
NV Lic 80318

775-777-7773  
info@newhomeselko.com

780 W. Silver St. #104  
Elko, NV 89801

Mon-Fri 8:30am-5:00pm  
Sat-Sun BY APPOINTMENT



**BAILEYHOMES**  
LIVE BETTER

# STANDARD FEATURES

Spring Creek, NV - by Bailey Homes

## A luxurious split bedroom home in Spring Creek, NV

The Charleston floor plan is free-flowing, with an expansive living area and open dining room that is the perfect place for entertaining. The kitchen is designed to accommodate the household chef, with plenty of counter space and a large center island. The master suite is a great place to retreat and unwind from the day, complete with a jetted jacuzzi tub, separate walk-in shower, dual sinks, and walk-in closet. Be sure to check out the Signature, Premier, and Executive options to decide which suits your wants and needs best.

### EXTERIOR

- Full upgraded vinyl siding with stone accents
- 30 year architectural shingles
- Rain gutters & downspouts
- Covered front porch

### GREAT ROOM

- Large open design, perfect for entertaining
- Ceiling fan & light combo

### MASTER SUITE

- Large master bedroom
- Large walk-in closet
- Ceiling fan & light combo
- Spacious jetted tub with tile surround
- Separate shower
- Birchwood vanity cabinet with dovetail drawers
- Granite countertops

### BATHROOMS

- Birchwood vanity cabinet with dovetail drawers
- Soft close drawers
- Granite countertops
- Tile floors
- Moen faucets

### KITCHEN & DINING

- Birchwood articulated cabinets with crown mould
- Soft close drawers
- Granite countertops with full tile backsplash
- Large kitchen bar
- Energy Star stainless steel appliances
- Engineered hardwood or tile floors
- Moen faucets

### ENERGY EFFICIENT DESIGN

- Heavy duty insulation
- 1" thick insulated LOW-E glass windows
- Insulated crawl-space foundation or basement

### GARAGE

- Extra large 3 car garage
- Sheetrocked & Insulated
- Garage door openers with digital keyless security pad

### OTHER

- Bailey Homes 10 Year Warranty
- Central air conditioning
- Propane Furnace



Bailey Homes  
NV Lic 80318

775-777-7773  
info@newhomeselko.com

780 W. Silver St. #104  
Elko, NV 89801

Mon-Fri 8:30am-5:00pm  
Sat-Sun BY APPOINTMENT



BAILEYHOMES  
LIVE BETTER