

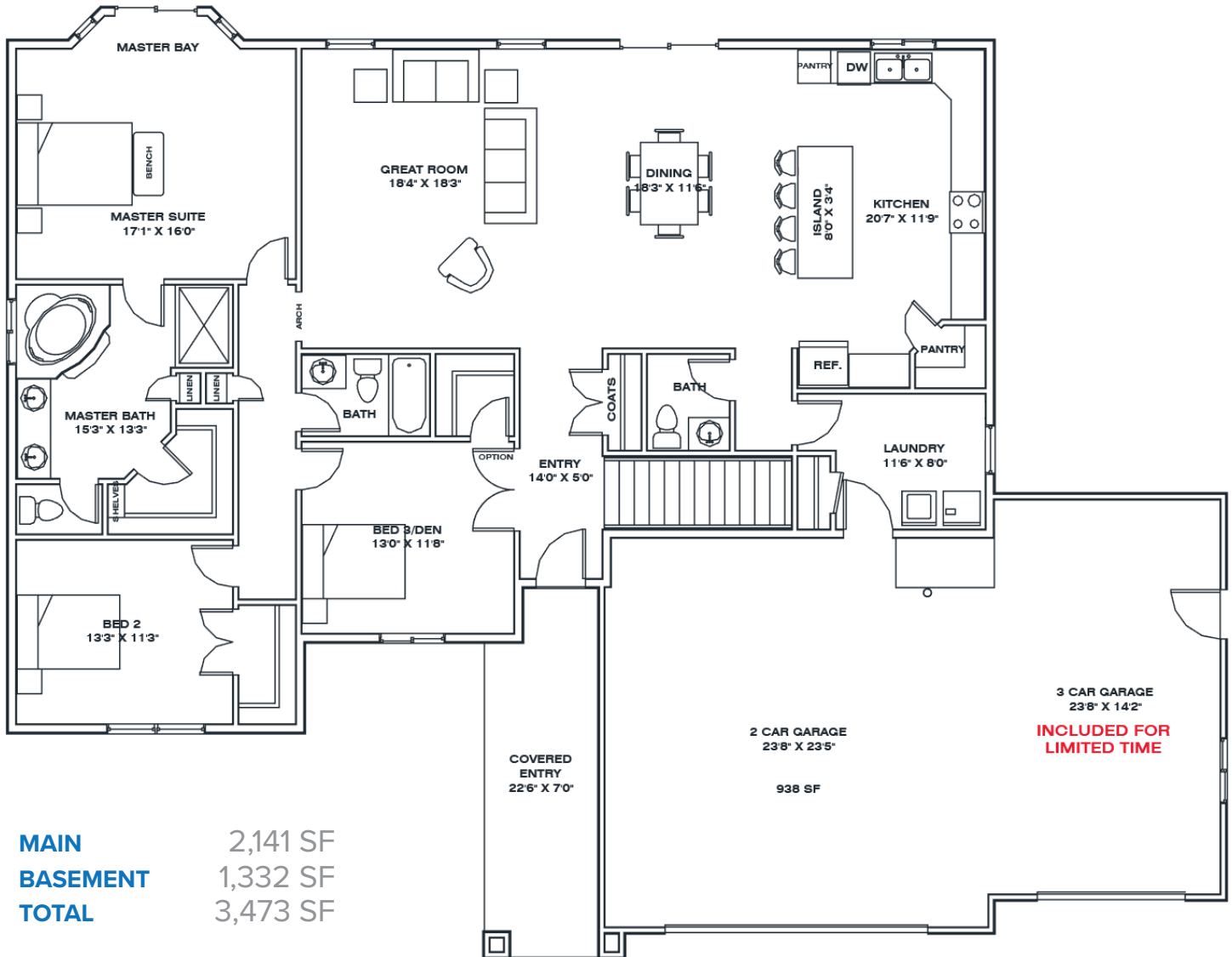
THE CHARLESTON HOME (BASEMENT SERIES)

3-5 bed | 2.5-3.5 bath | 3 car
Spring Creek, NV - by Bailey Homes



MAIN LEVEL

2,141 SF



Bailey Homes
NV Lic 80318

775-777-7773
info@newhomeselko.com

780 W. Silver St. #104
Elko, NV 89801

Mon-Fri 8:30am-5:00pm
Sat-Sun BY APPOINTMENT

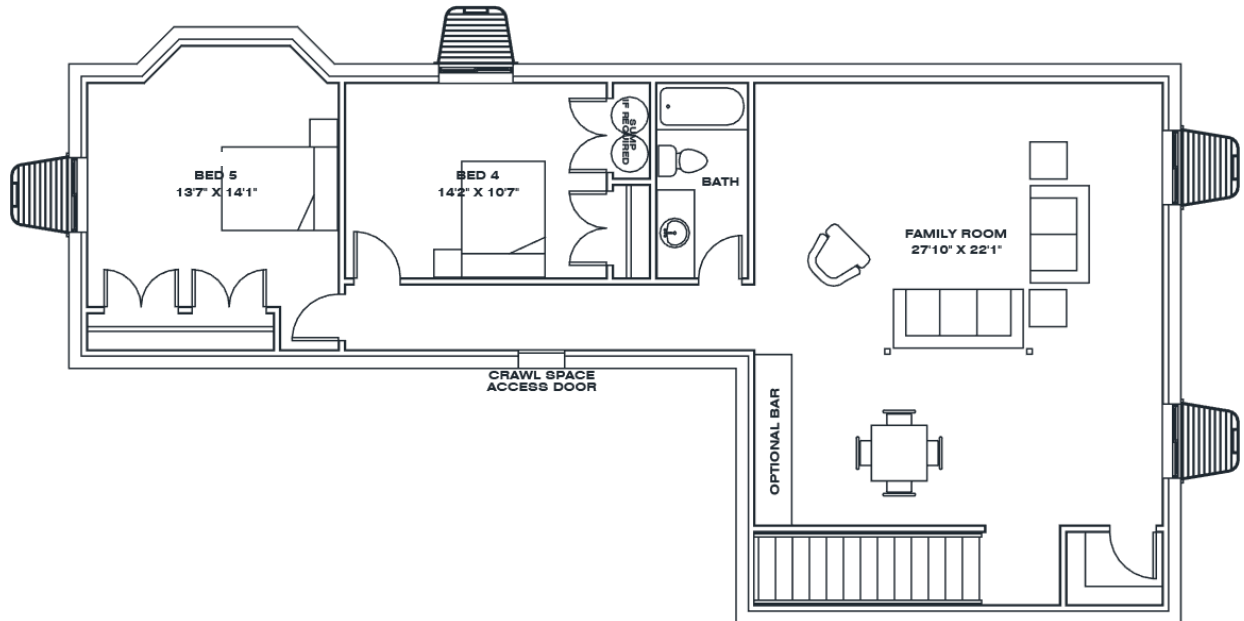


BAILEYHOMES
LIVE BETTER

THE CHARLESTON HOME (BASEMENT SERIES)

3-5 bed | 2.5-3.5 bath | 3 car
Spring Creek, NV - by Bailey Homes

BASEMENT LEVEL 1,332 SF



MAIN	2,141 SF
BASEMENT	1,332 SF
TOTAL	3,473 SF

Bailey Homes
NV Lic 80318



775-777-7773
info@newhomeselko.com



780 W. Silver St. #104
Elko, NV 89801



Mon-Fri 8:30am-5:00pm
Sat-Sun BY APPOINTMENT



BAILEYHOMES
LIVE BETTER

STANDARD FEATURES

Spring Creek, NV - by Bailey Homes

A luxurious split bedroom home in Spring Creek, NV

The Charleston floor plan is free-flowing, with an expansive living area and open dining room that is the perfect place for entertaining. The kitchen is designed to accommodate the household chef, with plenty of counter space and a large center island. The master suite is a great place to retreat and unwind from the day, complete with a jetted jacuzzi tub, separate walk-in shower, dual sinks, and walk-in closet. Be sure to check out the Signature, Premier, and Executive options to decide which suits your wants and needs best.

EXTERIOR

- Full upgraded vinyl siding with stone accents
- 30 year architectural shingles
- Rain gutters & downspouts
- Covered front porch

GREAT ROOM

- Large open design, perfect for entertaining
- Ceiling fan & light combo

MASTER SUITE

- Large master bedroom
- Large walk-in closet
- Ceiling fan & light combo
- Spacious jetted tub with tile surround
- Separate shower
- Birchwood vanity cabinet with dovetail drawers
- Granite countertops

BATHROOMS

- Birchwood vanity cabinet with dovetail drawers
- Soft close drawers
- Granite countertops
- Tile floors
- Moен faucets

KITCHEN & DINING

- Birchwood articulated cabinets with crown mould
- Soft close drawers
- Granite countertops with full tile backsplash
- Large kitchen bar
- Energy Star stainless steel appliances
- Engineered hardwood or tile floors
- Moен faucets

ENERGY EFFICIENT DESIGN

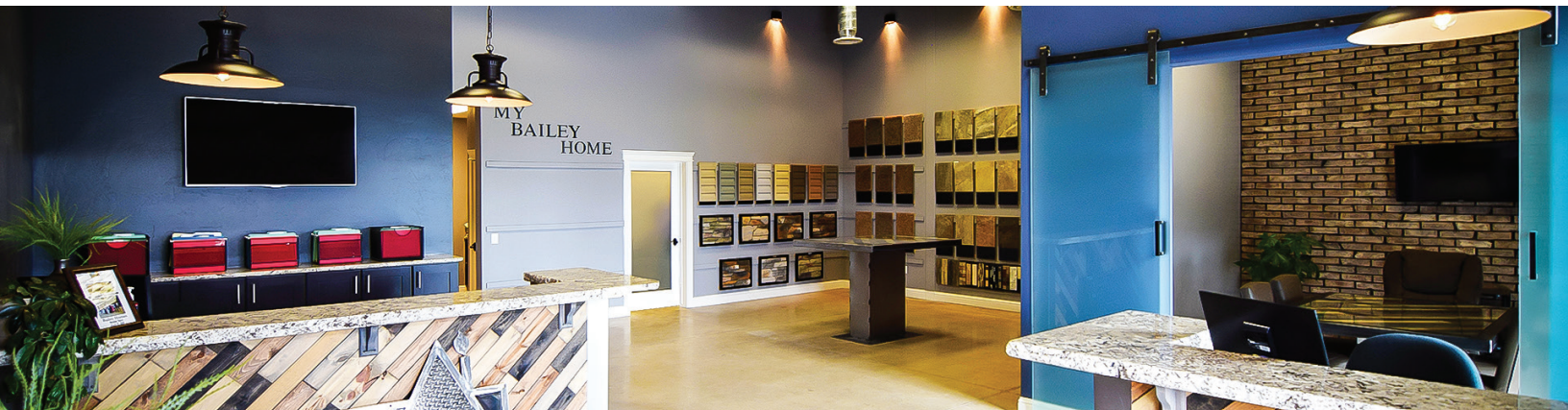
- Heavy duty insulation
- 1" thick insulated LOW-E glass windows
- Insulated crawl-space foundation or basement

GARAGE

- Extra large 3 car garage
- Sheetrocked & Insulated
- Garage door openers with digital keyless security pad

OTHER

- Bailey Homes 10 Year Warranty
- Central air conditioning
- Propane Furnace



Bailey Homes
NV Lic 80318

775-777-7773
info@newhomeselko.com

780 W. Silver St. #104
Elko, NV 89801

Mon-Fri 8:30am-5:00pm
Sat-Sun BY APPOINTMENT



BAILEYHOMES
LIVE BETTER