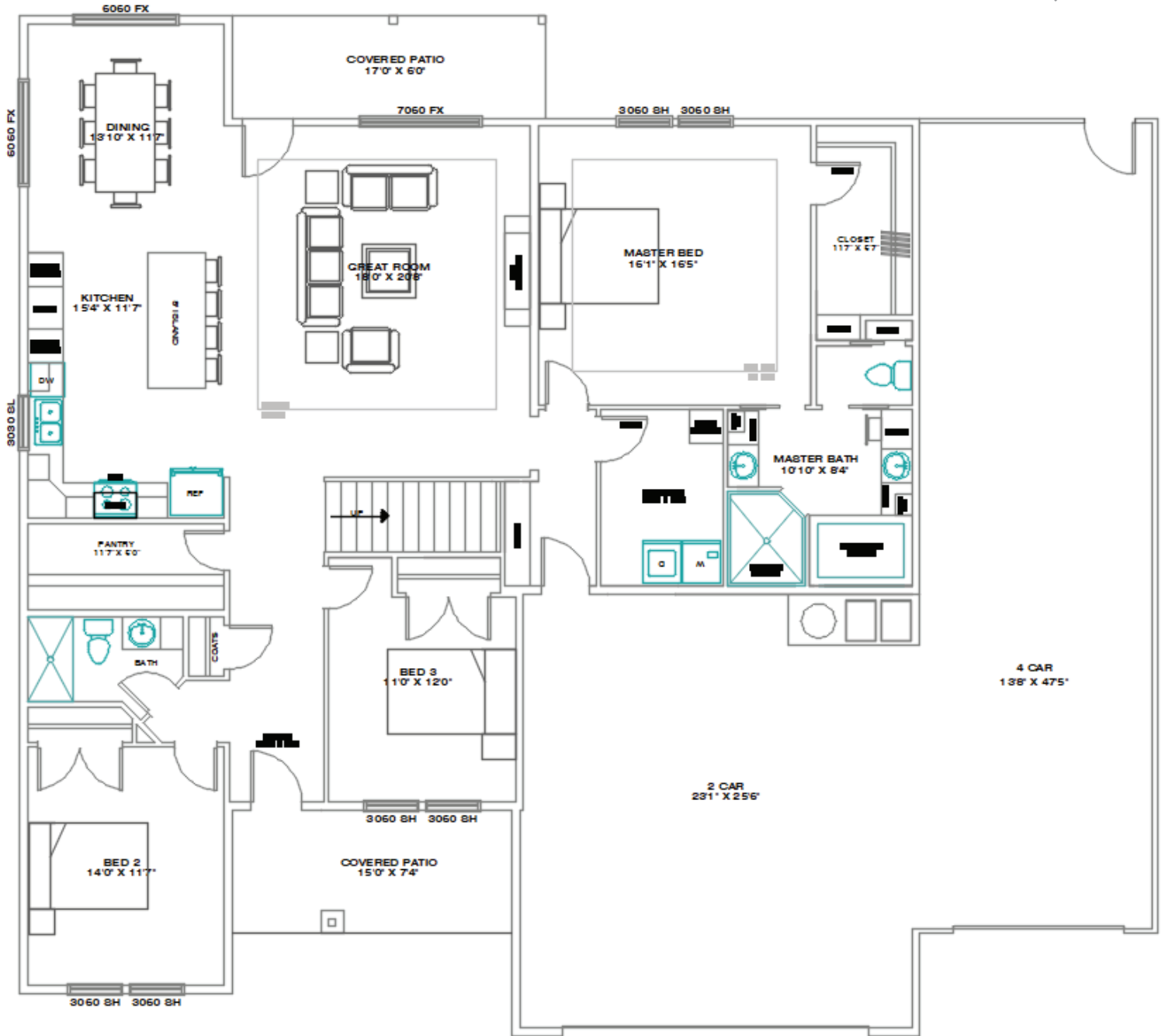


THE AXBRIDGE HOME

5 bed | 3 bath | 2 car + RV
3194 COLLEGE COURT - Elko, NV - by Bailey Homes

MAIN LEVEL
2,071 SF



TOTAL
2,936 SF

Bailey Homes
NV Lic 3417A

775-777-7773
info@newhomeselko.com

780 W. Silver St. #104
Elko, NV 89801

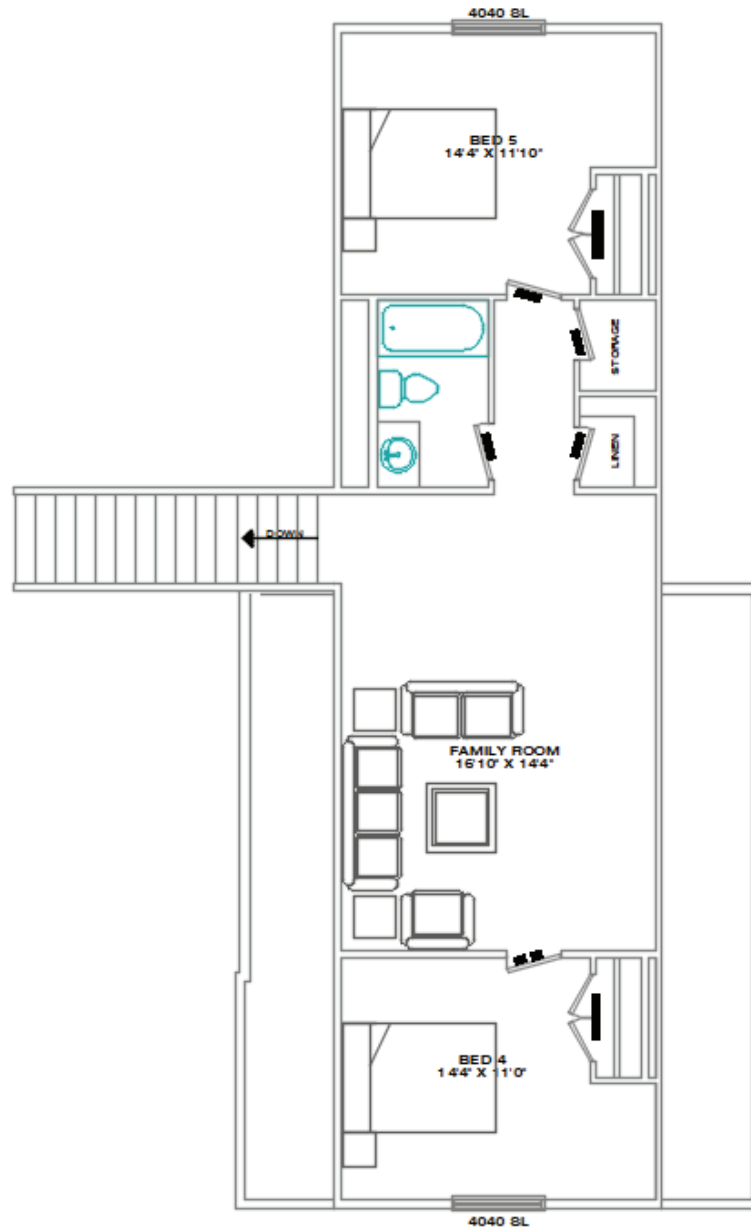
Mon-Fri 8:30am-5:00pm
Sat-Sun BY APPOINTMENT



THE AXBRIDGE HOME

5 bed | 3 bath | 2 car + RV
3194 COLLEGE COURT - Elko, NV - by Bailey Homes

BONUS LEVEL
874 SF



TOTAL
2,936 SF

Bailey Homes
NV Lic 3417A



775-777-7773
info@newhomeselko.com



780 W. Silver St. #104
Elko, NV 89801



Mon-Fri 8:30am-5:00pm
Sat-Sun BY APPOINTMENT



**BAILEY
HOMES**
LIVE BETTER

STANDARD FEATURES

3194 COLLEGE COURT - Elko, NV - by Bailey Homes

5 bedroom executive home

A spacious 5 bedroom home with open living design. The Axbridge is version 2 of the Belfast. This time with a larger great room, larger entry, oversized butlers pantry, larger master, larger master bath, larger bonus room, and an oversized RV garage. 9' ceilings throughout with a 2 story ceiling in the entry. Large kitchen with a massive 10' long island, gas range with hood and upgraded appliances. The master suite includes an extra large walk-in closet and luxury bath with a walk-in shower with tiled walls and freestanding tub. Expect all the same luxury standards included with every Bailey home.

EXTERIOR

Hardy board siding, stucco, stone accents
30 year architectural shingles
Rain gutters & downspouts
Covered front porch

GREAT ROOM

Large open design, perfect for entertaining
Luxury Vinyl Plank flooring
Ceiling fan & recessed lighting
10' ceiling tray

MASTER SUITE

Walk-in closet
Ceiling fan & recessed lighting
Spacious jetted tub with tile surround
Extra large walk-in shower with tile walls
Vanity cabinet with dovetail drawers
Soft close doors
Soft close drawers
Granite countertops

BATHROOMS

Vanity cabinet with dovetail drawers & soft close
Soft close drawers
Granite countertops
Tile floors
Moen faucets

KITCHEN & DINING

Articulated cabinets with crown moulding
Staggered heights and depths
Soft close drawers
Soft close doors
Granite countertops with full tile backsplash
Large kitchen bar
Energy Star stainless steel appliances
Luxury Vinyl Plank flooring
Moen faucets

ENERGY EFFICIENT DESIGN

Heavy duty insulation
1" thick insulated LOW-E glass windows
Insulated crawl-space foundation or basement

GARAGE

Extra large 2 car garage
Sheetrocked & Insulated
Garage door openers with digital keyless security pad

OTHER

Central air conditioning
Natural Gas Furnace
Electric Fireplace



Bailey Homes
NV Lic 3417A



775-777-7773
info@newhomeselko.com



780 W. Silver St. #104
Elko, NV 89801



Mon-Fri 8:30am-5:00pm
Sat-Sun BY APPOINTMENT

