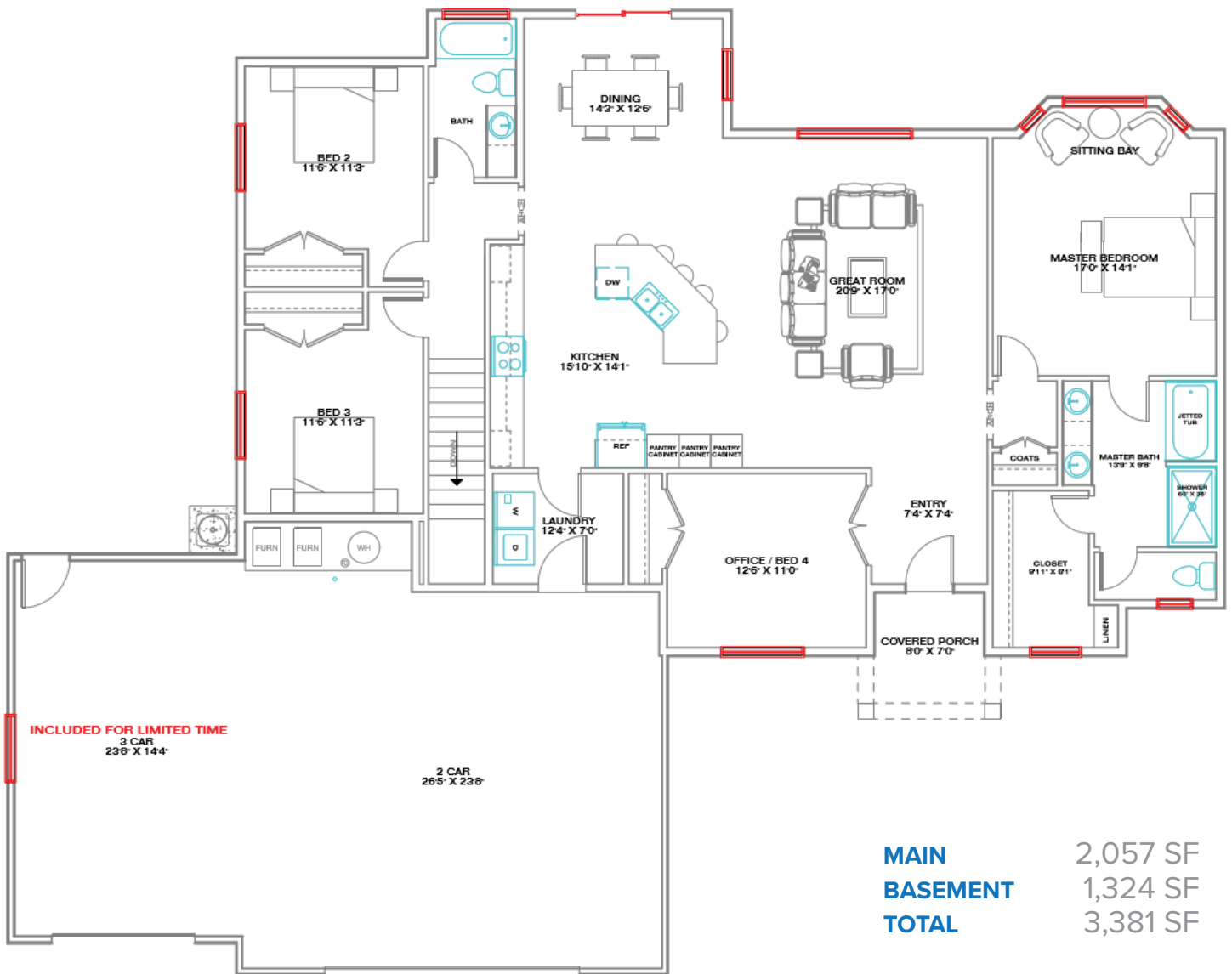


THE ARIA HOME (BASEMENT SERIES)

4-6 bed | 2-3 bath | 3 car
Spring Creek, NV - by Bailey Homes



MAIN LEVEL 2,057 SF



Bailey Homes
NV Lic 80318

775-777-7773
info@newhomeselko.com

780 W. Silver St. #104
Elko, NV 89801

Mon-Fri 8:30am-5:00pm
Sat-Sun BY APPOINTMENT

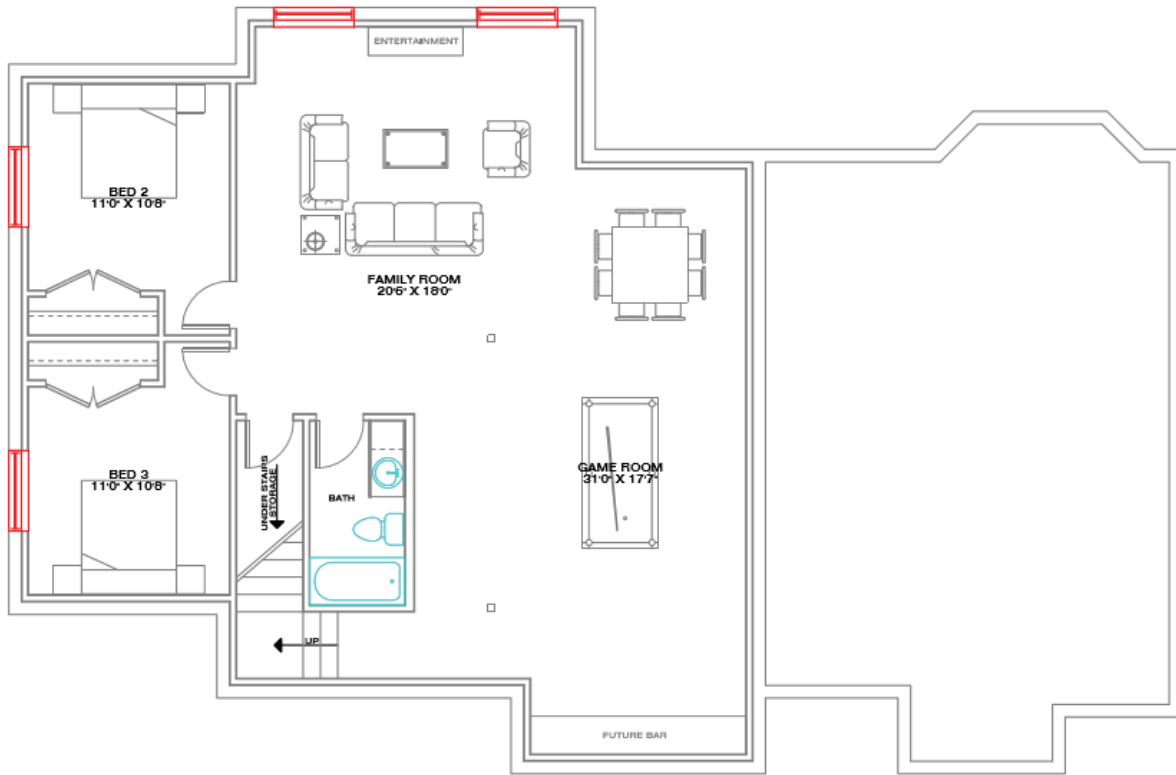


BAILEYHOMES
LIVE BETTER

THE ARIA HOME (BASEMENT SERIES)

4-6 bed | 2-3 bath | 3 car
Spring Creek, NV - by Bailey Homes

BASEMENT LEVEL 1,324 SF



MAIN	2,057 SF
BASEMENT	1,324 SF
TOTAL	3,381 SF

Bailey Homes
NV Lic 80318

775-777-7773
info@newhomeselko.com

780 W. Silver St. #104
Elko, NV 89801

Mon-Fri 8:30am-5:00pm
Sat-Sun BY APPOINTMENT

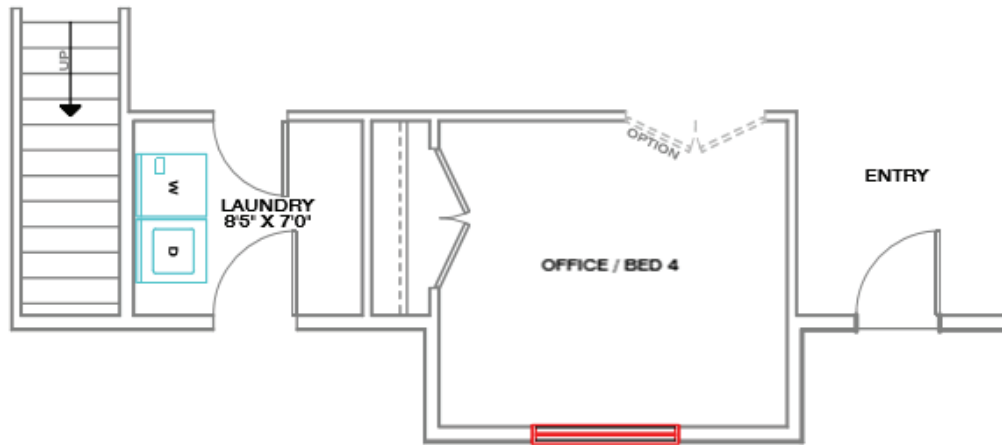


THE ARIA HOME (BASEMENT SERIES) ... "OPTIONS"

Spring Creek, NV - by Bailey Homes

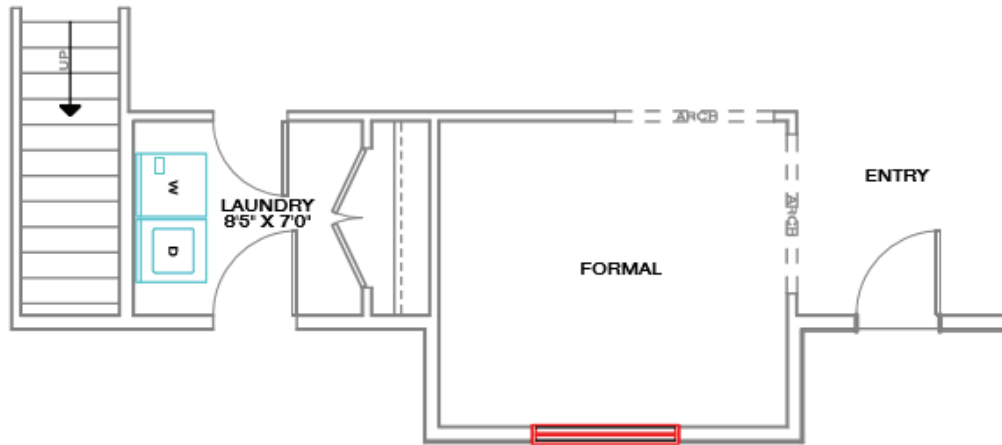
OFFICE | BED 4 OPTION

NO CHARGE



FORMAL DINING OPTION

NO CHARGE



Bailey Homes
NV Lic 80318

775-777-7773
info@newhomeselko.com

780 W. Silver St. #104
Elko, NV 89801

Mon-Fri 8:30am-5:00pm
Sat-Sun BY APPOINTMENT



BAILEYHOMES
LIVE BETTER

STANDARD FEATURES

Spring Creek, NV - by Bailey Homes

A luxurious split bedroom home in Spring Creek, NV

The Aria model offers a truly executive living experience in Spring Creek Nevada. Everything from the beautiful exterior details, to the free-flowing floor plan, makes this model the perfect place to call home. The split floor plan has four bedrooms, two baths, a sitting room, and basement option. Everything about this home is sheer elegance. Entertain family and friends in the large open kitchen and great room, or unwind from a busy day in the spaciouly designed master suite. Be sure to check out the Signature, Premier, and Executive options to decide which suits your wants and needs best.

EXTERIOR

- Full upgraded vinyl siding with stone accents
- 30 year architectural shingles
- Rain gutters & downspouts
- Covered front porch

GREAT ROOM

- Large open design, perfect for entertaining
- Ceiling fan & light combo

MASTER SUITE

- Large master bedroom
- Large walk-in closet
- Ceiling fan & light combo
- Spacious jetted tub with tile surround
- Separate shower
- Birchwood vanity cabinet with dovetail drawers
- Granite countertops

BATHROOMS

- Birchwood vanity cabinet with dovetail drawers
- Soft close drawers
- Granite countertops
- Tile floors
- Moен faucets

KITCHEN & DINING

- Birchwood articulated cabinets with crown mould
- Soft close drawers
- Granite countertops with full tile backsplash
- Large kitchen bar
- Energy Star stainless steel appliances
- Engineered hardwood or tile floors
- Moен faucets

ENERGY EFFICIENT DESIGN

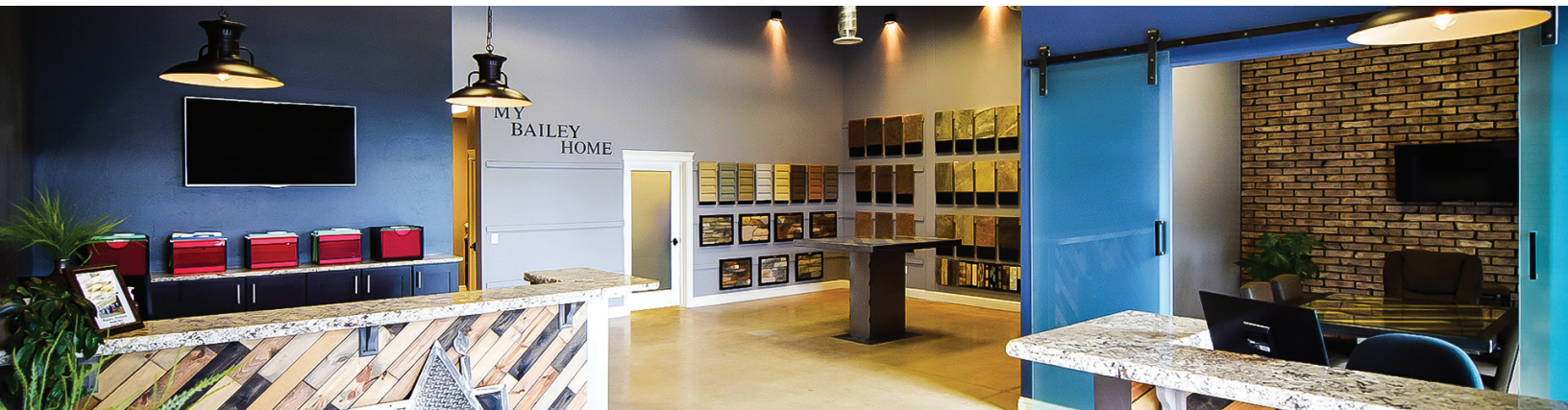
- Heavy duty insulation
- 1" thick insulated LOW-E glass windows
- Insulated crawl-space foundation or basement

GARAGE

- Extra large 3 car garage
- Sheetrocked & Insulated
- Garage door openers with digital keyless security pad

OTHER

- Bailey Homes 10 Year Warranty
- Central air conditioning
- Propane Furnace



Bailey Homes
NV Lic 80318



775-777-7773
info@newhomeselko.com



780 W. Silver St. #104
Elko, NV 89801



Mon-Fri 8:30am-5:00pm
Sat-Sun BY APPOINTMENT



BAILEYHOMES
LIVE BETTER